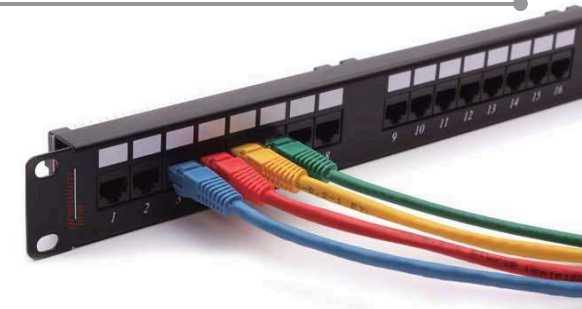




CATEGORY 6 CABLING SOLUTIONS

*premium
line*

www.premiumline-cabling.com



Patch Panel

Category 6 0.5U Shielded Patch Panel

Premium Line Category 6 0.5U shielded Patch panel comply with ANSI/TIA-568-C.2, ISO/IEC 11801 and EN 50173-1 Class E specifications. The complete module complies with EU ROHS directive. The construction is in standard 19" but in 0.5U size, this is the only difference from Premium Line 1U shielded patch panel on the purpose of rack space saving. The main metal frame and rear back cover made by SECC material, with the thickness over 1.0mm. Dual type IDC accepts 22-26 AWG solid cable, easy for termination with 110 or Krone tools. The finished product available in black or light gray RAL7035 color.

Physical Characteristics

Jack	Phosphor bronze, 50µ inch gold plating over nickel in contact area
IDC	100µ inch nickel plated over phosphor bronze
Shielded Cover	50-60µ inch nickel plated over phosphor bronze

Electrical Characteristics

Dielectric Strength	1000V RMS for 1min
Current Rating	1.5Amp Max.
Insulation Resistance	10MΩ Min.
Contact Resistance	2mΩ per contact
Temperature Range	-10°C to 60°C
Humidity	10%-90%; non condensing

Applications

- 1000BASE-TX Gigabit Ethernet
- 1000BASE-T Gigabit Ethernet
- 100BASE-TX Fast Ethernet
- 10BASE-T Ethernet
- Voice, Video and other applications



176272412

All the products are verified the electrical characteristics required in the directive.

Category 6 0.5U Shielded Patch Panel

PART NO.	DESCRIPTION	PACKING SIZE
176272412	Premium Line Category 6 24port Shielded Patch Panel, 0.5U, Dual Type IDC, Black	50.5x27.9x27 cm
176272419	Premium Line Category 6 24port Shielded Patch Panel, 0.5U, Dual Type IDC, RAL7035	50.5x27.9x27 cm

Patch Panel

Category 6 Unshielded Patch Panel

Premium line Category 6 Unshielded Patch Panel comply with ANSI/TIA-568-C.2, ISO/IEC 11801 and EN 50173-1 Class E specifications. The complete module complies with EU ROHS directive. The construction is in standard 1U 19" size, suits for all 19" rack installation. The main metal frame made by SECC material, with the thickness over 1.0mm. Dual type IDC accepts 22-26 AWG solid cable, easy for termination with 110 or Krone tools. The finished product available in 24 ports (1U) and 48 ports (2U).

Physical Characteristics

Jack	Phosphor bronze, 3µ inch gold plating over nickel in contact area
IDC	100µ inch nickel plated over phosphor bronze

Electrical Characteristics

Dielectric Strength	1000V RMS for 1min
Current Rating	1.5Amp Max.
Insulation Resistance	10MΩ Min.
Contact Resistance	2mΩ per contact
Temperature Range	-10°C to 60°C
Humidity	10%-90%; non condensing

Applications

- 1000BASE-TX Gigabit Ethernet
- 1000BASE-T Gigabit Ethernet
- 100BASE-TX Fast Ethernet
- 10BASE-T Ethernet
- Voice, Video and other applications



176122412

All the products are verified the electrical characteristics required in the directive.

Category 6 Unshielded Patch Panel

PART NO.	DESCRIPTION	PACKING SIZE
176122412	Premium Line Category 6 24port Unshielded Patch Panel, Dual Type IDC, Black	50x24.5x25.5 cm
176124812	Premium Line Category 6 48port Unshielded Patch Panel, Dual Type IDC, Black	50x24.5x25.5 cm
19500002	Premium Line Cable Management Bar, Click On Type, Black	50.5x27.9x27 cm
195030002	Premium Line Cable Management Bar, Screw Type, Black	50.5x27.9x27 cm

CATEGORY 6 CABLING SOLUTIONS