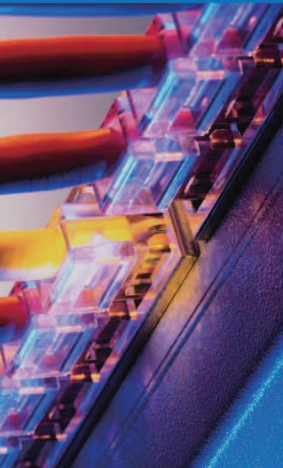


CATEGORY 5e CABLING SOLUTIONS



Patch Panel Category 5e Labeling Unshielded Patch Panel

Premium line Category 5e labeling unshielded patch panel comply with TIA/EIA-568C.2, ISO/IEC 11801 and EN 50173-1 Class D specifications. The complete module complies with EU ROHS directive.

Physical Characteristics

Jack Phosphor bronze, 3µ inch gold plating over nickel in contact area
IDC 100µ inch nickel plated over phosphor bronze

Electrical Characteristics

Dielectric Strength 1000V RMS for 1min
Current Rating 1.5Amp Max.
Insulation Resistance 10MΩ Min.
Contact Resistance 2mΩ per contact
Temperature Range -10°C to 60°C
Humidity 10%--90%; non condensing

Applications

- 1000BASE-T Gigabit Ethernet
- 100BASE-TX Fast Ethernet.
- 10BASE-T Ethernet.
- Voice, Video and other applications.

175722412



All the products are verified the electrical characteristics required in the directive.

Category 5e Labeling Unshielded Patch Panel

PART NO. DESCRIPTION Premium Line Category 5e 24 port Unshielded Patch Panel with Labeling Holder, dual type IDC, Black 50x24.5x2.5 cm

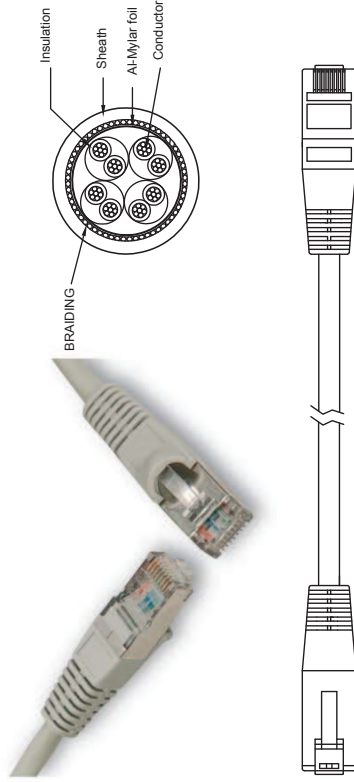
www.premiumline-cabling.com

Patch Cord Category 5e SF/UTP Patch Cord

Premium Line Category 5e SF/UTP patch cord supports the whole channel transmission as per standard ANSI/TIA-568-C.2, ISO/IEC 11801 and EN 50173-1 Class D specifications. With overall aluminum screen and additional tinned copper braiding protection, against the environment noise also avoid signals leak. The 26 AWG stranded conductor and flexible construction easy to bend or manage. Normally, the patch cord will be in TIA 568B wiring, TIA 568A or other wiring method upon request. The patch cord finished with snag proof boot.

Applications

- 000BASE-T Gigabit Ethernet
- 100BASE-TX Fast Ethernet.
- 10BASE-T Ethernet.
- Voice, Video and other applications.



Construction

Conductor	Material / size	Bare Copper / 26AWG
Insulation	Construction	7/0.16 ± 0.005 mm
Inner-Shield	Material	Foam-Skin PE
Braid	Material	an aluminum foil screen over all pairs
	Material	Stranded Tinned Copper
Sheath	Material	PVC
	Diameter	5.6± 0.3 mm
		LSOH
		5.6 ± 0.3 mm

Category 5e SF/UTP Patch Cord

LENGTH	GREY	GREEN	BLUE	RED	YELLOW
0.5m	185310055	185310056	185310054	185310053	185310058
1 m	185310105	185310106	185310104	185310103	185310108
2 m	185310205	185310206	185310204	185310203	185310208
3 m	185310305	185310306	185310304	185310303	185310308
5 m	185310505	185310506	185310504	185310503	185310508
7 m	185310705	185310706	185310704	185310703	185310708
10 m	185311005	185311006	185311004	185311003	185311008
15 m	185311505	185311506	185311504	185311503	185311508
20 m	185312005	185312006	185312004	185312003	185312008

Other lengths, colors or halogen free on request.