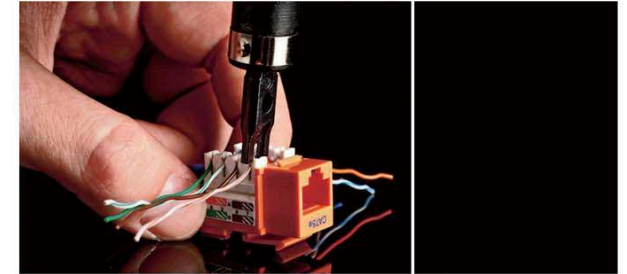


CATEGORY 5e CABLING SOLUTIONS

**premium
line**

www.premiumline-cabling.com



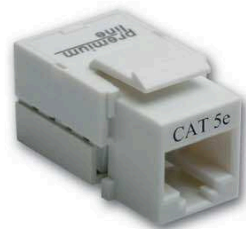
Keystone Jack

Category 5e 90° Unshielded Keystone Jack

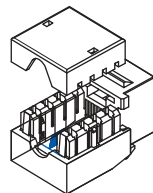
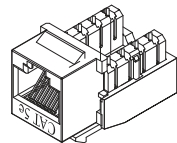
Premium Line 90° unshielded keystone jack is in classical design, the dual type IDC accepts 22-26 AWG solid cables, easy terminated with 110 or Krone tools, supports T568 A&B wiring.

The finish product complies with EU ROHS directive. With its good & stable performance, this module earns the good sales result in the market.

All the products are verified the electrical characteristics required in the directive.



105111010



Physical Characteristics

Housing	PC, UL94 V-0
Jack Contact	phosphor bronze, 50μ inch goldplated over nickel
IDC Contacts	100μ inch nickel plated overphosphor bronze

Electrical Characteristics

Dielectric Strength	1000V RMS for 1min
Current Rating	1.5Amp Max.
Insulation Resistance	10MΩ Min.
Contact Resistance	2mΩ per contact
Temperature Range	-10°C to 60°C
Humidity	10%~90%; non condensing

Applications

- 1000BASE-T Gigabit Ethernet
- 100BASE-TX Fast Ethernet
- 10BASE-T Ethernet
- Voice, Video and other applications

All the products are verified the electrical characteristics required in the directive.

Category 5e 90° Unshielded Keystone Jack

PART NO.	DESCRIPTION	PACKING SIZE
105111010	Premium Line Category 5e 90° Unshielded Keystone Jack, Dual Type IDC, White	53.8x35.2x27 cm

Category 5e 90° Unshielded slim Keystone Jack

PART NO.	DESCRIPTION	PACKING SIZE
105311010	Premium Line Category 5e 90° Unshielded Slim Keystone Jack, Dual Type IDC, White	53.8x35.2x27 cm

Keystone Jack

Category 5e 180° Unshielded Keystone Jack

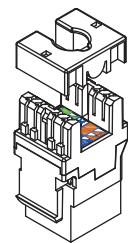
Premium Line 180° unshielded keystone jack is in classical design, the dual type IDC accepts 22-26 AWG solid cables, easy terminated with 110 or Krone tools, supports T568 A&B wiring.

The finish product complies with EU ROHS directive. With its good & stable performance, this module earns the good sales result in the market.

All the products are verified the electrical characteristics required in the directive.



105121010



Physical Characteristics

Housing	PC, UL94 V-0
Jack Contact	phosphor bronze, 50μ inch goldplated over nickel
IDC Contacts	100μ inch nickel plated overphosphor bronze

Electrical Characteristics

Dielectric Strength	1000V RMS for 1min
Current Rating	1.5Amp Max.
Insulation Resistance	10MΩ Min.
Contact Resistance	2mΩ per contact
Temperature Range	-10°C to 60°C
Humidity	10%~90%; non condensing

Applications

- 1000BASE-T Gigabit Ethernet
- 100BASE-TX Fast Ethernet
- 10BASE-T Ethernet
- Voice, Video and other applications

All the products are verified the electrical characteristics required in the directive.

Category 5e 180° unshielded Keystone Jack

PART NO.	DESCRIPTION	Packing Size
105121010	Premium Line Category 5e 180° Unshielded Keystone Jack, Dual Type IDC, White	53.8x35.2x27 cm
171022402	Premium Line 24port High Density Unloaded Patch Panel for Unshielded Keystone Jacks, Black	53.8x35.2x27 cm

CATEGORY 5e CABLING SOLUTIONS