



CATEGORY 6 CABLING SOLUTIONS

*premium
line*

www.premiumline-cabling.com

Keystone Jack Category 6 Shielded Die-Casting Keystone Jack

Premium Line 180 ° shielded Die-casting Keystone Jack in special design for optimal EMI protection. Tool-less design no need additional tools for termination, supports T568 A&B wiring.

Keystone Jack Category 6 Shielded Keystone Jack

Premium Line 90 ° shielded Keystone Jack is in fully shielded design, optimizes shield effectiveness protection from EMI. Dual IDC connector can accept 22-26 AWG solid cables, supports T568 A&B wiring, and using 110 or Krone tools for termination.

Premium Line Category 6 shielded Keystone Jack performance conform to ANSI/TIA-568-C.2, ISO/IEC 11801 and EN50173-1 Category 6 specifications, supports the channel link bandwidth up to 250MHz.



Physical Characteristics

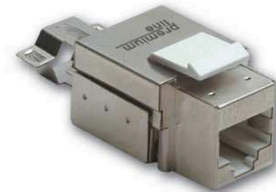
Jack	Phosphor bronze, 50µ inch gold plating over nickel in contact area
IDC	100µ inch nickel plated over phosphor bronze
Shielded Cover	50-60µ inch nickel plated over phosphor bronze

Electrical Characteristics

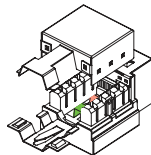
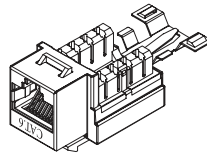
Dielectric Strength	1000V RMS for 1min
Current Rating	1.5Amp Max.
Insulation Resistance	10MΩ Min.
Contact Resistance	2mΩ per contact
Temperature Range	-10°C to 60°C
Humidity	10%-90%; non condensing

Applications

- 1000BASE-TX Gigabit Ethernet
- 1000BASE-T Gigabit Ethernet
- 100BASE-TX Fast Ethernet
- 10BASE-T Ethernet
- Voice, Video and other applications



106211010



Physical Characteristics

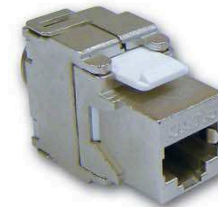
Body Material	Housing: PC, UL94 V-0 Body: zinc die-casting
Jack Contact	phosphor bronze, 50µ inch gold plated over nickel
IDC Contacts	100µ inch nickel plated over phosphor bronze

Electrical Characteristics

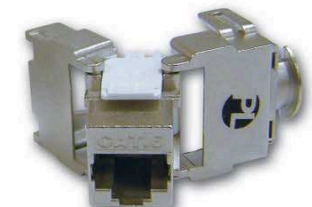
Dielectric Strength	1000V RMS for 1min
Current Rating	1.5Amp Max.
Insulation Resistance	10MΩ Min.
Contact Resistance	2mΩ per contact
Temperature Range	-10°C to 60°C
Humidity	10%-90%; non condensing

Applications

- 1000BASE-TX Gigabit Ethernet
- 1000BASE-T Gigabit Ethernet
- 100BASE-TX Fast Ethernet.
- 10BASE-T Ethernet.
- Voice, Video and other applications.



106524010



All the products are verified the electrical characteristics required in the directive.

Category 6 Shielded Keystone Jack

PART NO.	DESCRIPTION	PACKING SIZE
106211010	Premium Line Category 6 90° Shielded Keystone Jack, Dual Type IDC	53.8x35.2x27 cm

All the products are verified the electrical characteristics required in the directive.

Category 6 Shielded Die-Casting Keystone Jack

PART NO.	DESCRIPTION	PACKING SIZE
106524010	Premium Line Category 6 180° Shielded Die-Casting Keystone Jack	53.8x35.2x27 cm
170252402	Premium Line High Density Shielded Unloaded Patch Panel with Integrated Bar	50.5x27.9x27 cm

CATEGORY 6 CABLING SOLUTIONS